

Intro to Abnormal Head CT



Renee B. Van Stavern, MD
Neurology

Abnormal head CT

An order for reading scans

- Patient, date, type of scan, indication
- Quality of scan
- Cranial and extracranial structures
 - ◆ (white spaces)
- Ventricles and cisterns
 - ◆ (black spaces)
- Brain parenchyma
 - ◆ Hemorrhage
 - ◆ Lesions

Describe lesions

- Location
- Dimensions
- Density
- Margins
- Contrast
- Effects
- Associated findings
- Temporal evolution

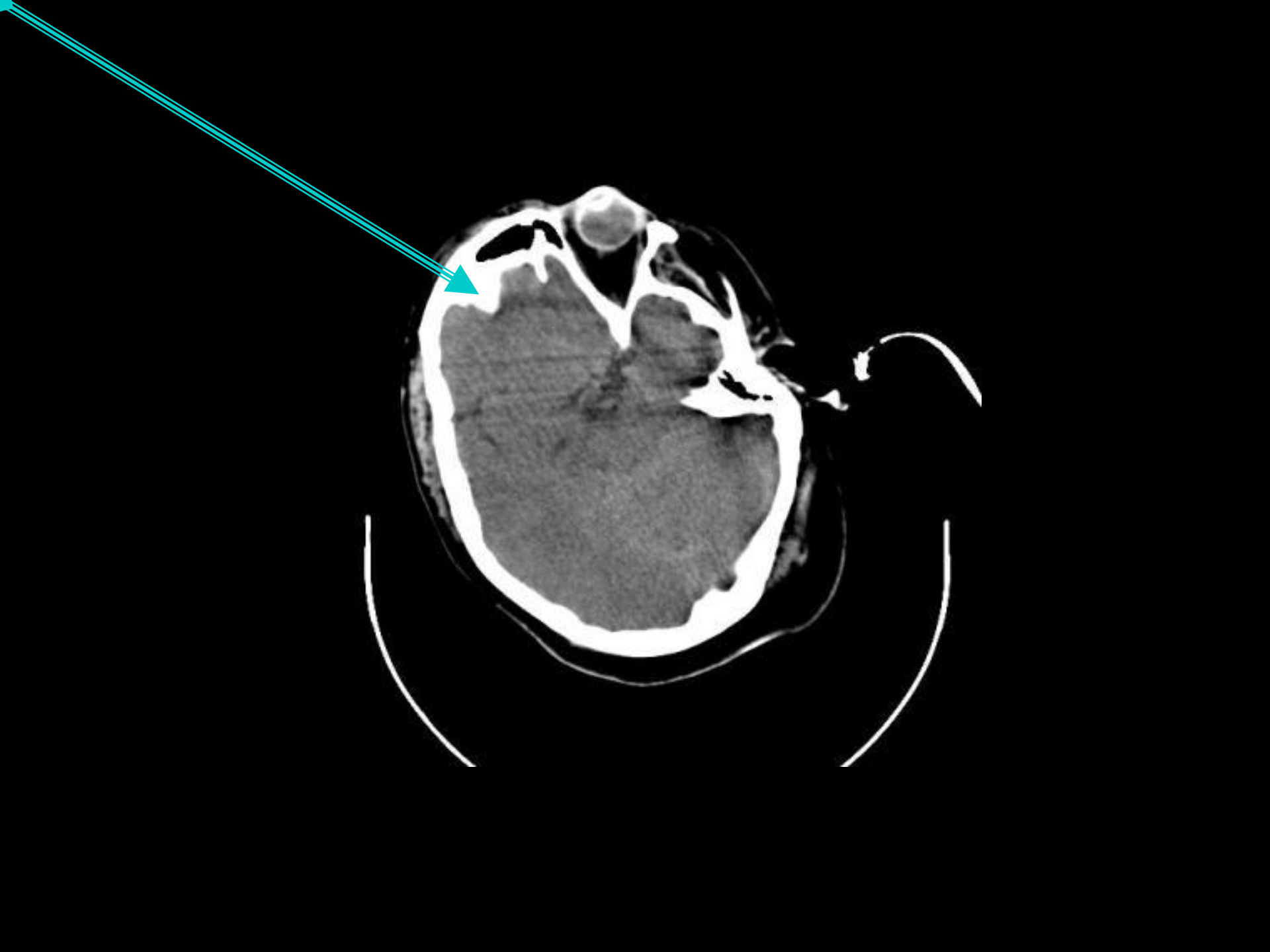
- Differential diagnosis

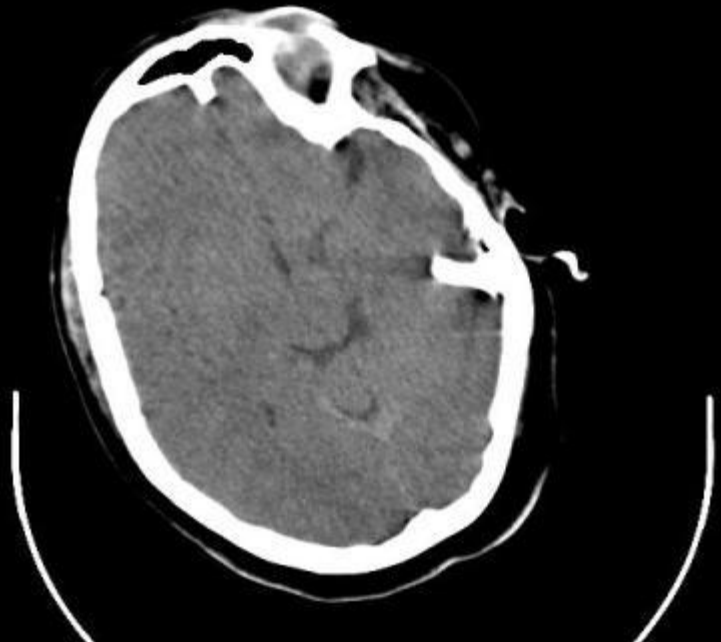
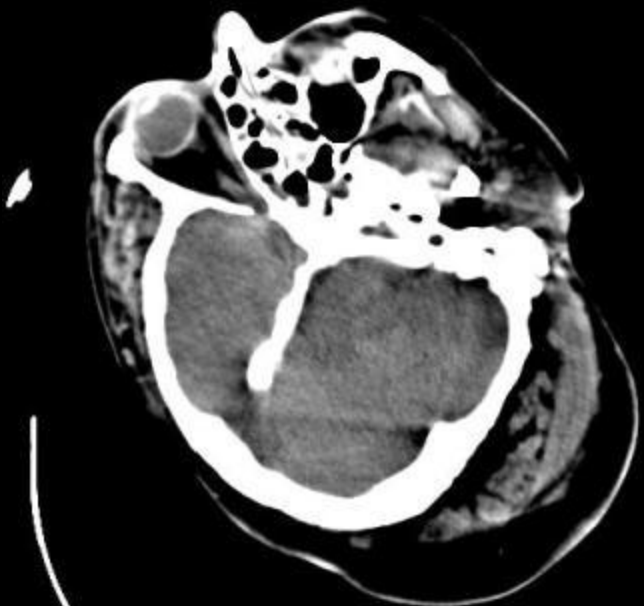
Increased CT brain attenuation

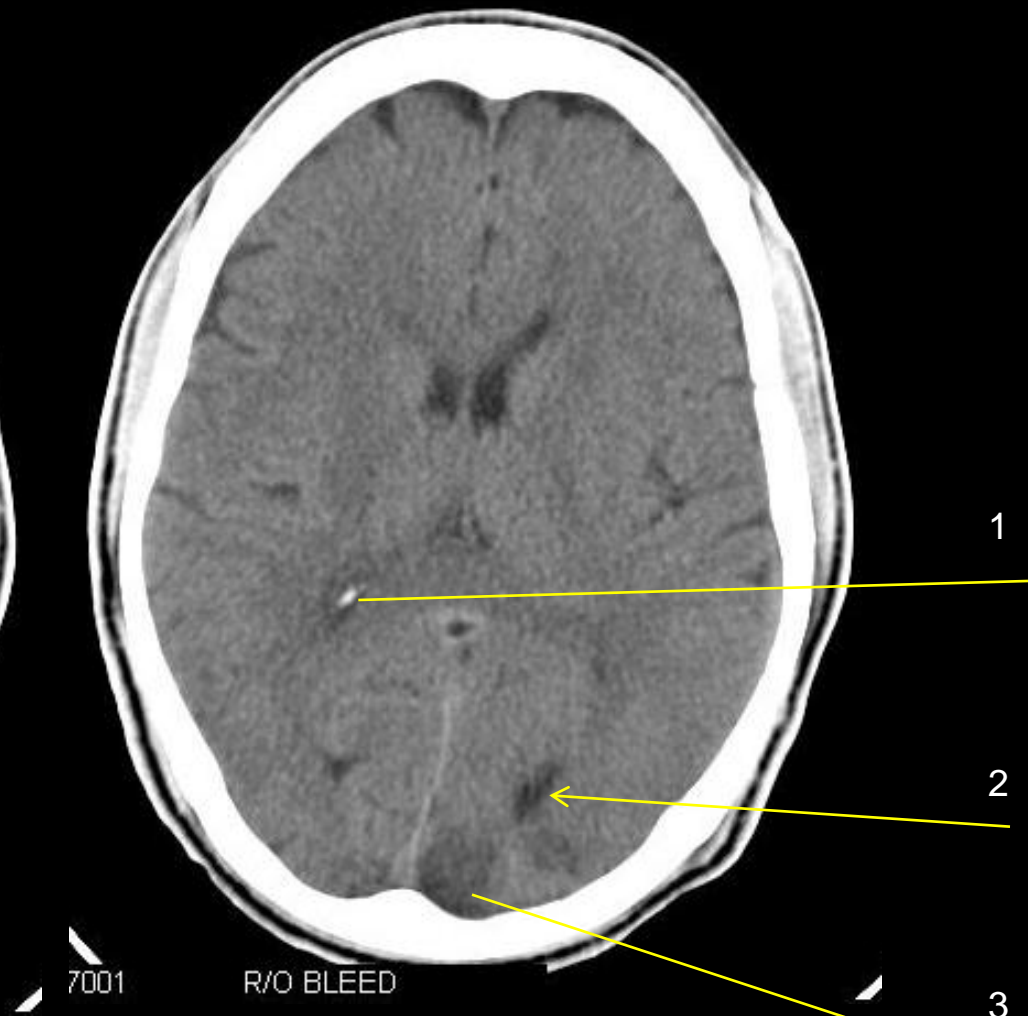
- Hemorrhage (acute)
- Calcium
- Contrast
- Metal

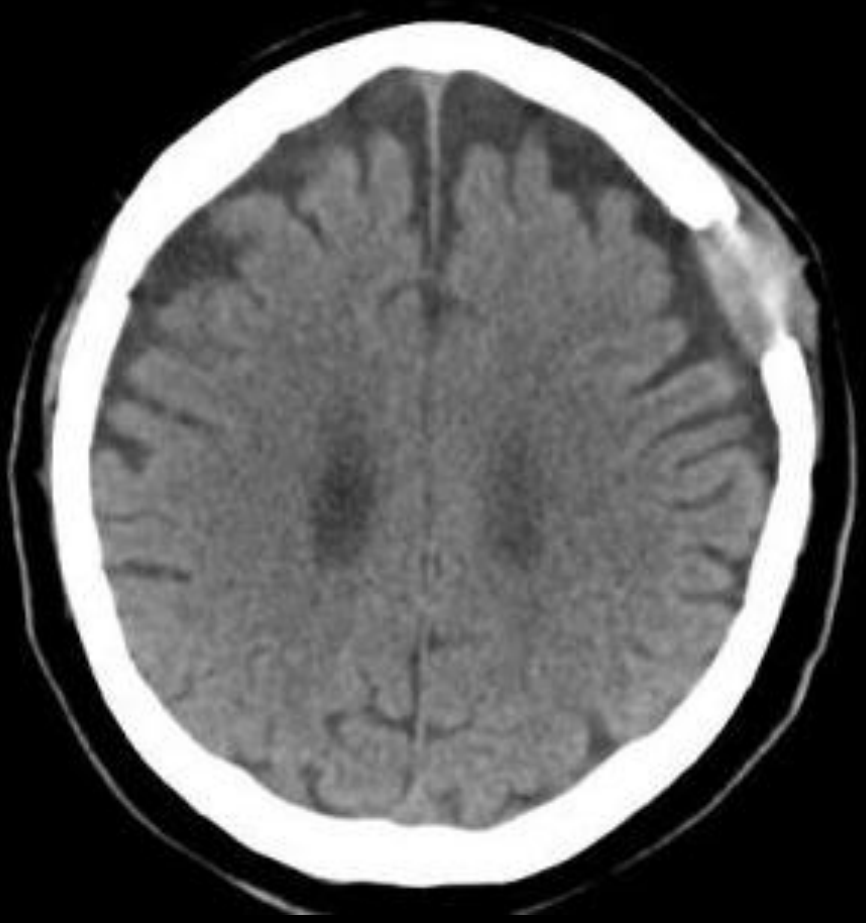
Decreased CT brain attenuation

- Ischemia
- Infection
- Neoplasm
- Trauma
- Edema
- Hemorrhage (old)





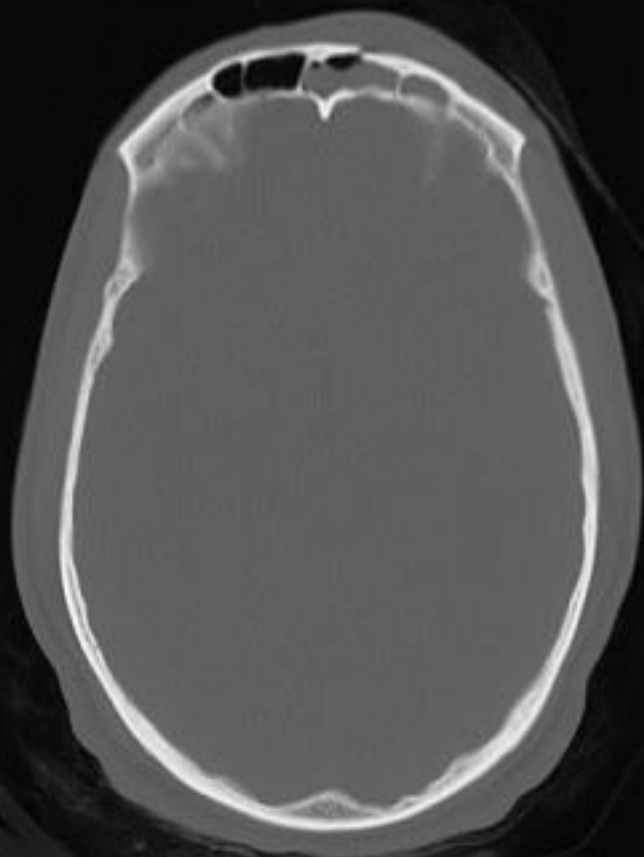




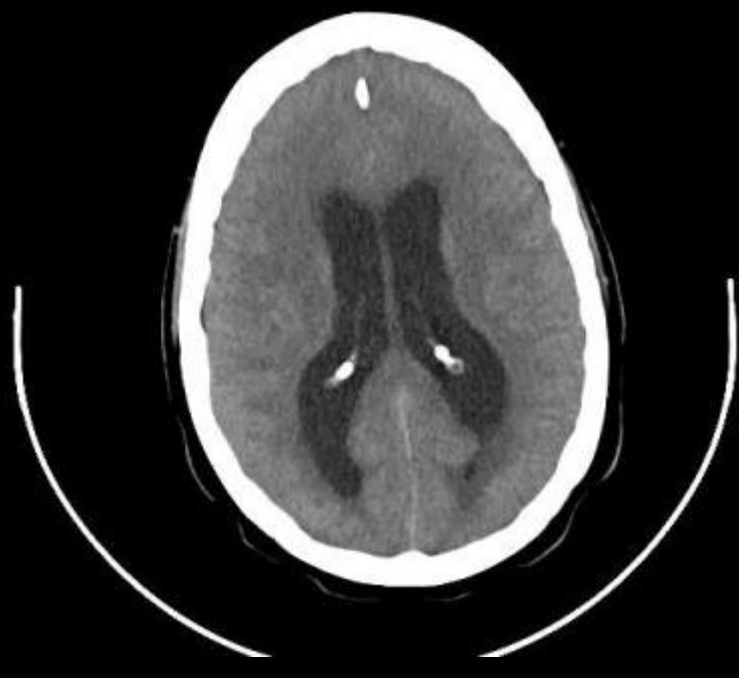
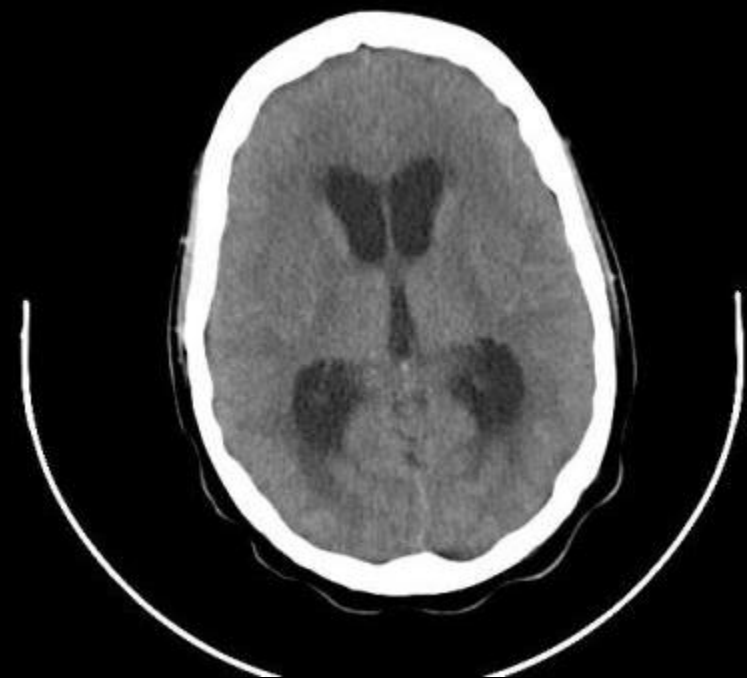
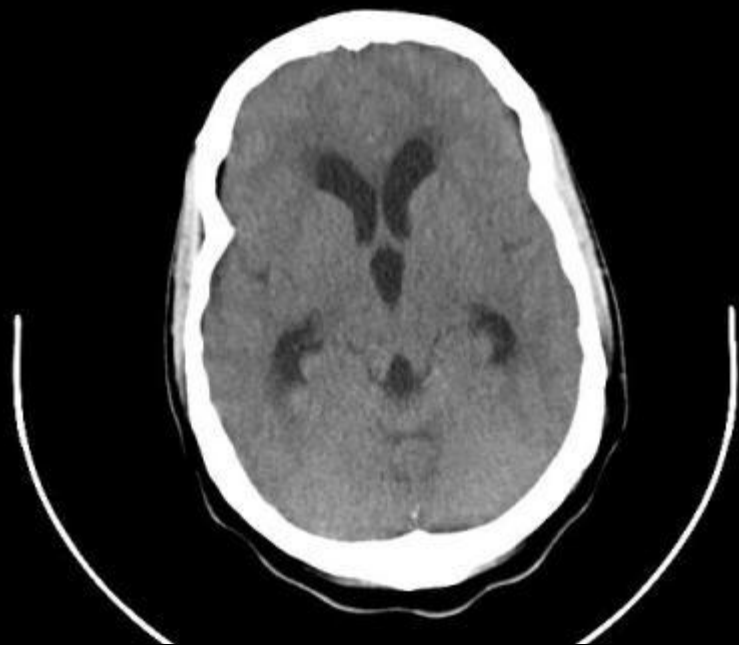
Abscess of metal producing bacteria – R. Azmeh



Magic bullet – E. Bailey

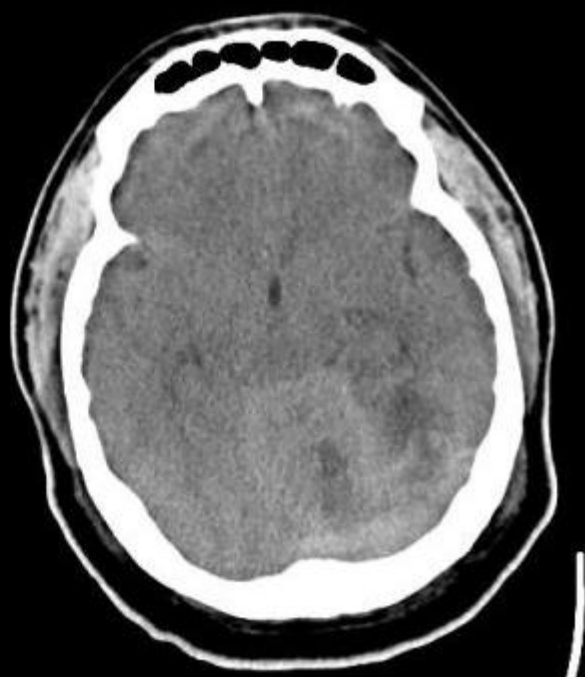
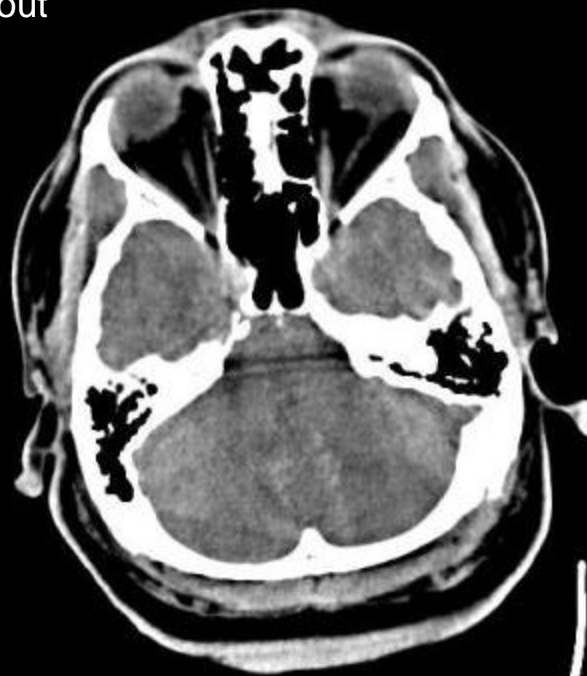


Black Spaces!

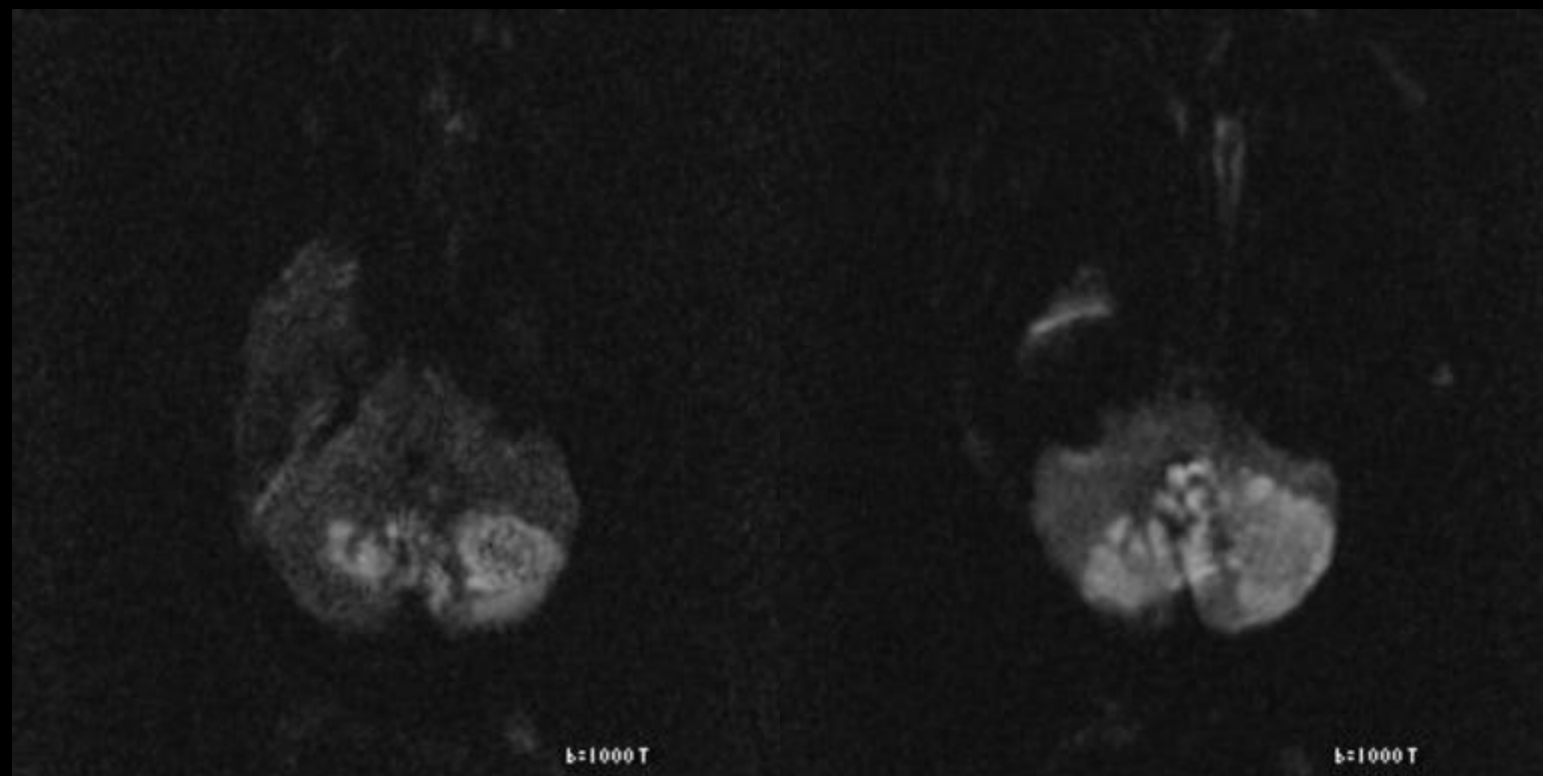


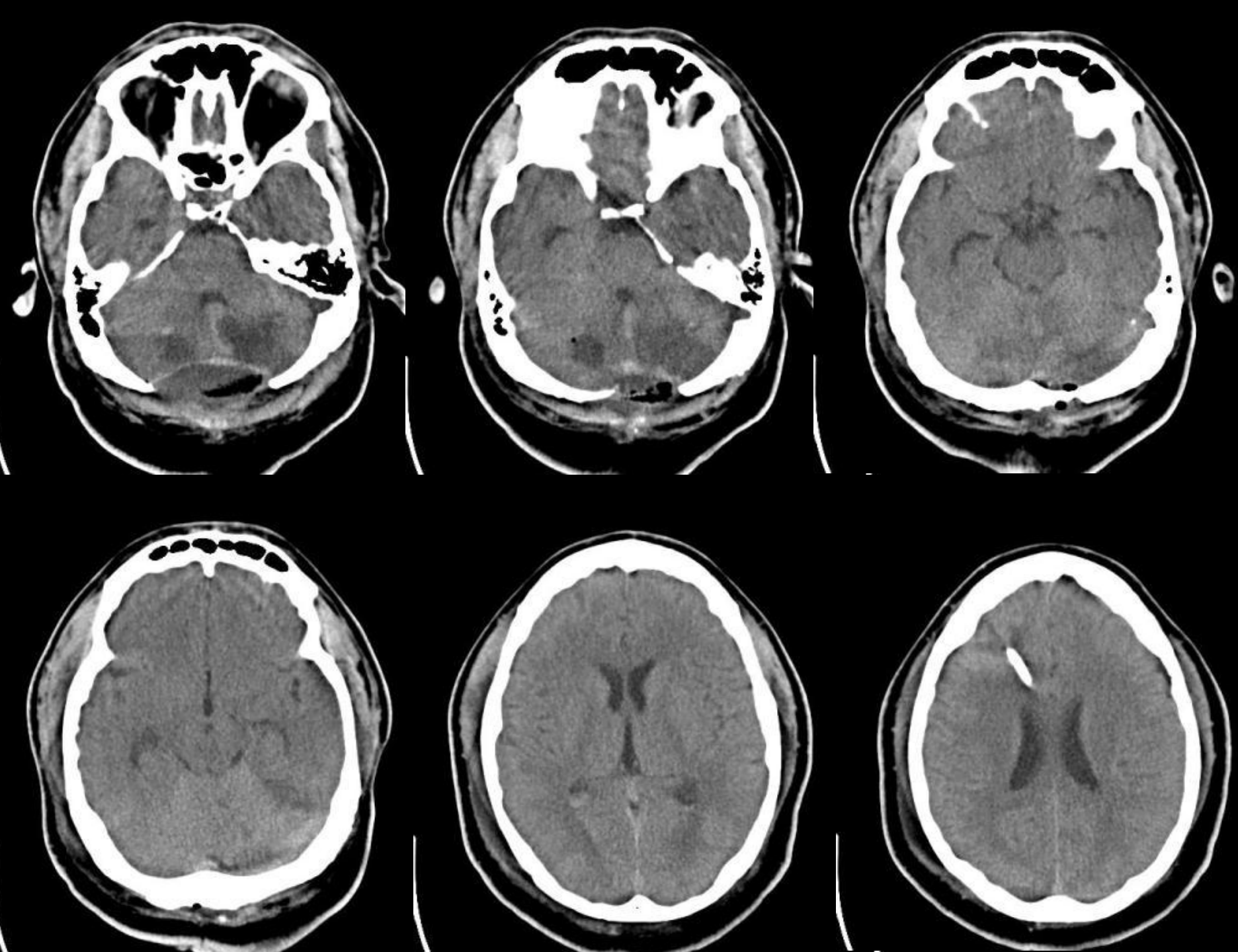


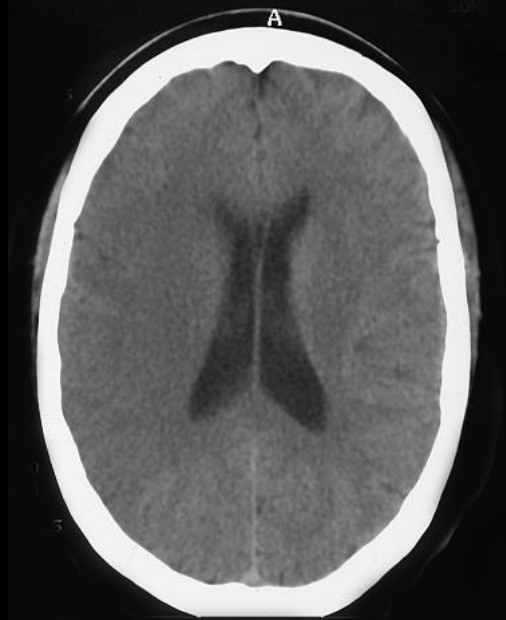
The CSF has leaked out
M. Duvall

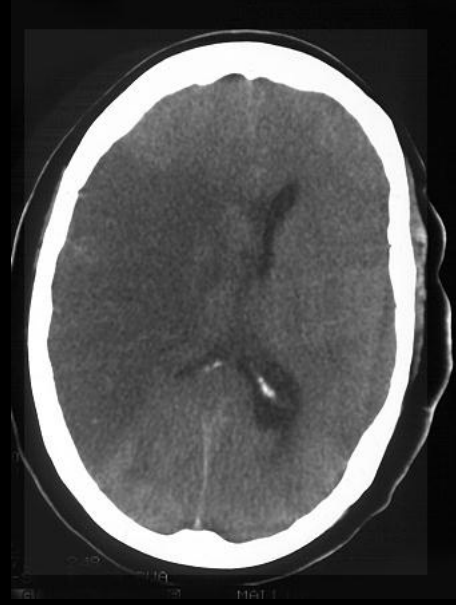


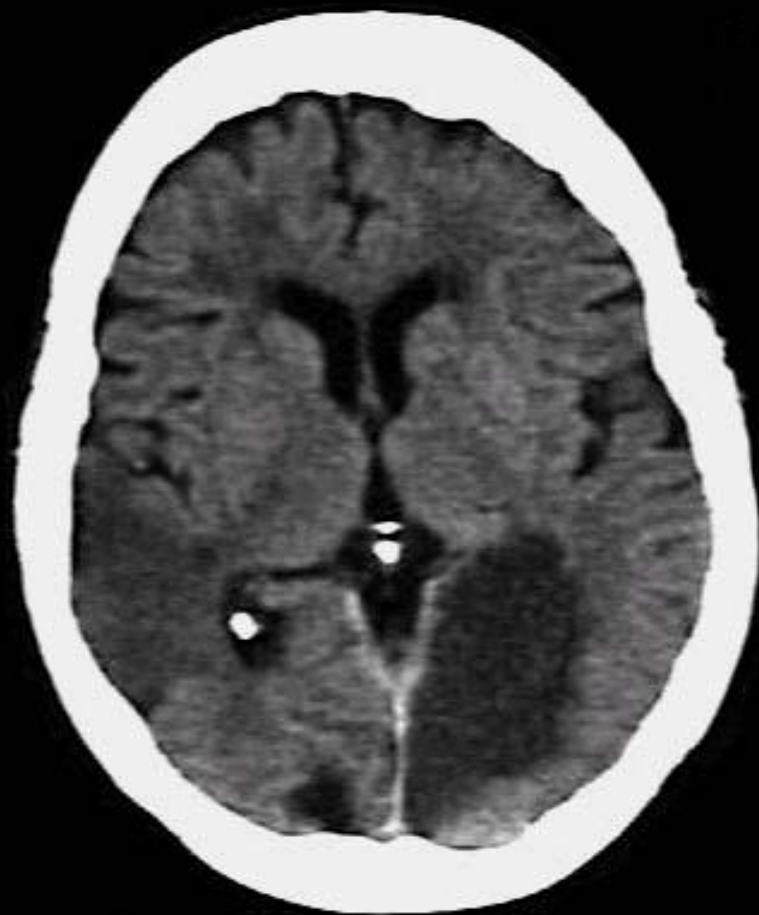
Look for the presence
of the absence – M. Painschab

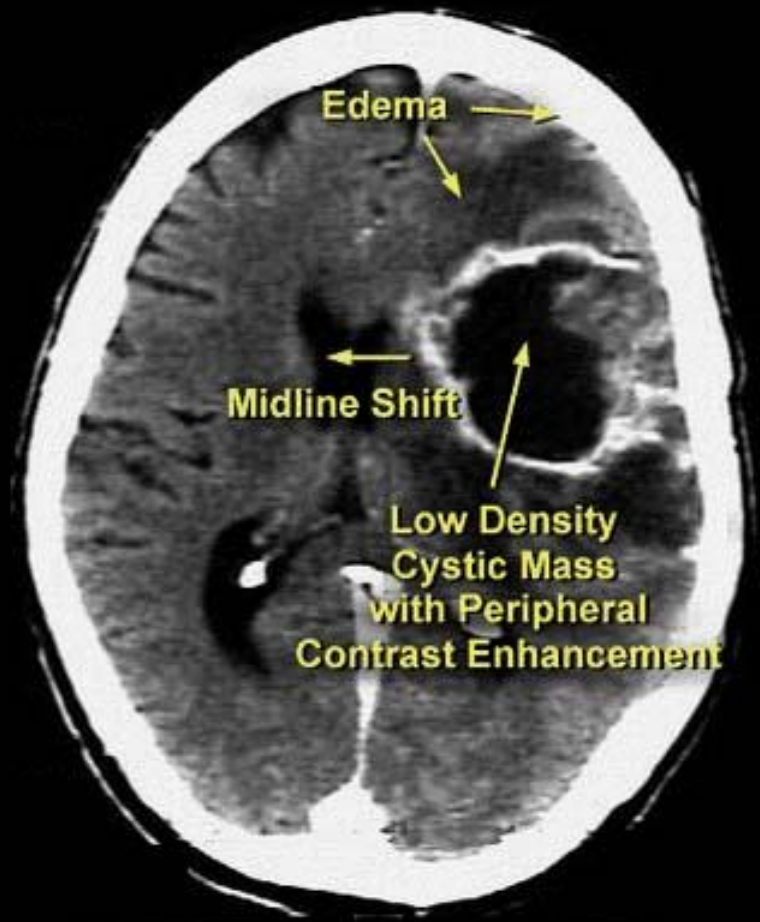


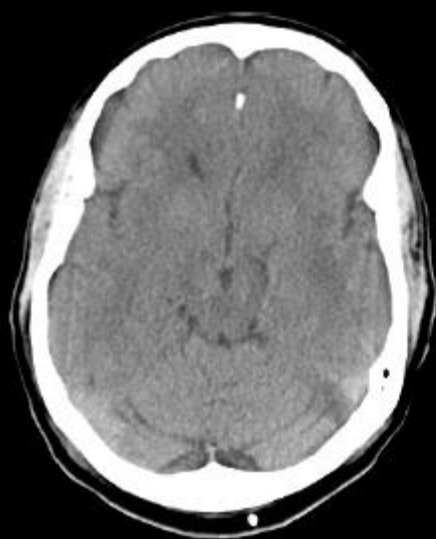


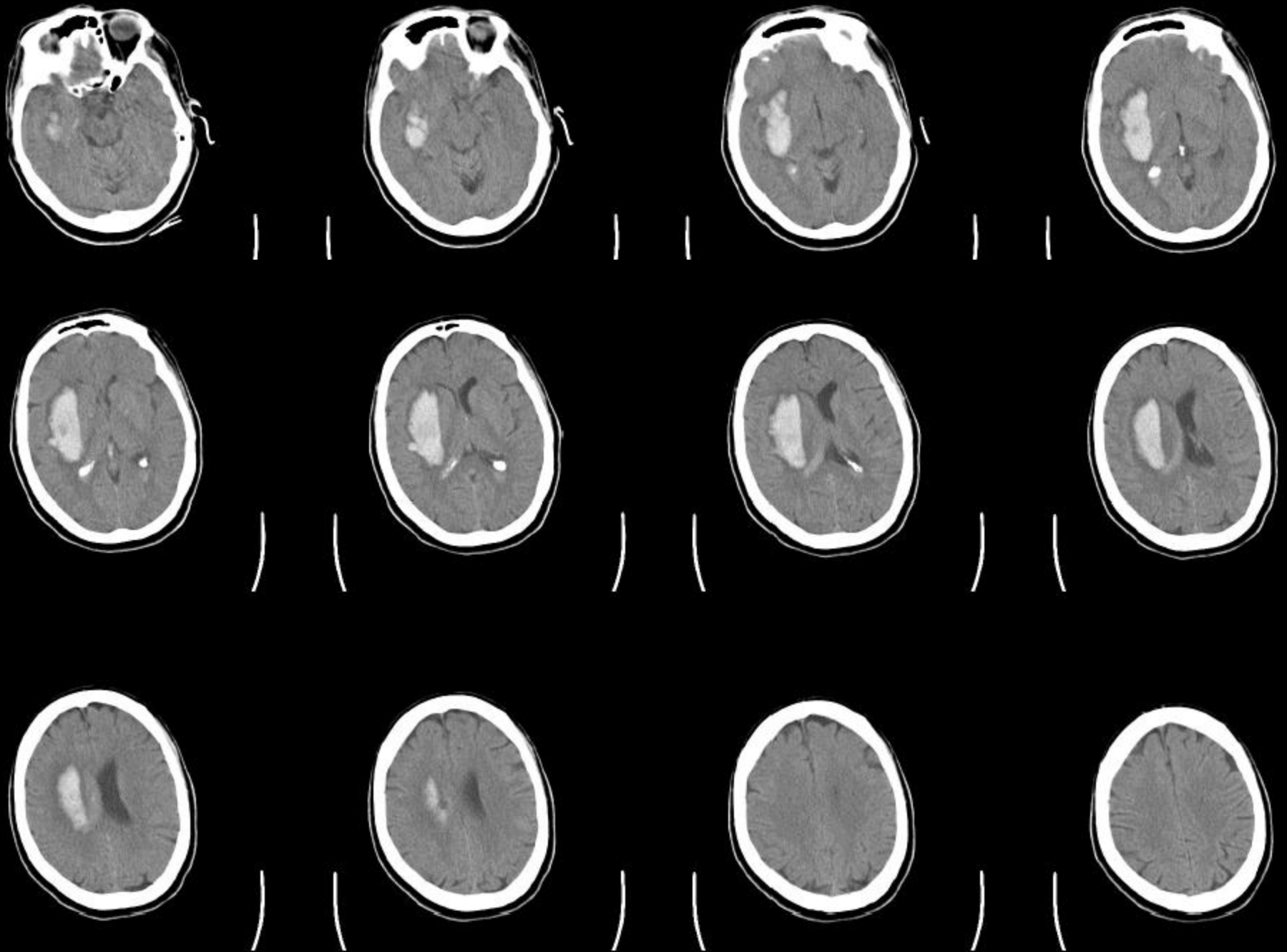


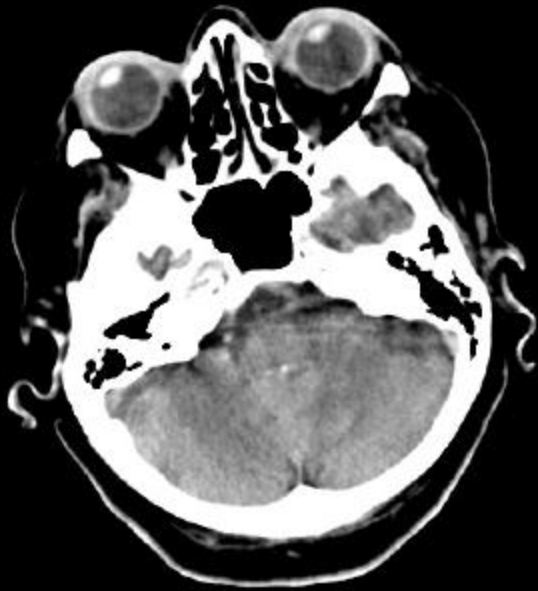








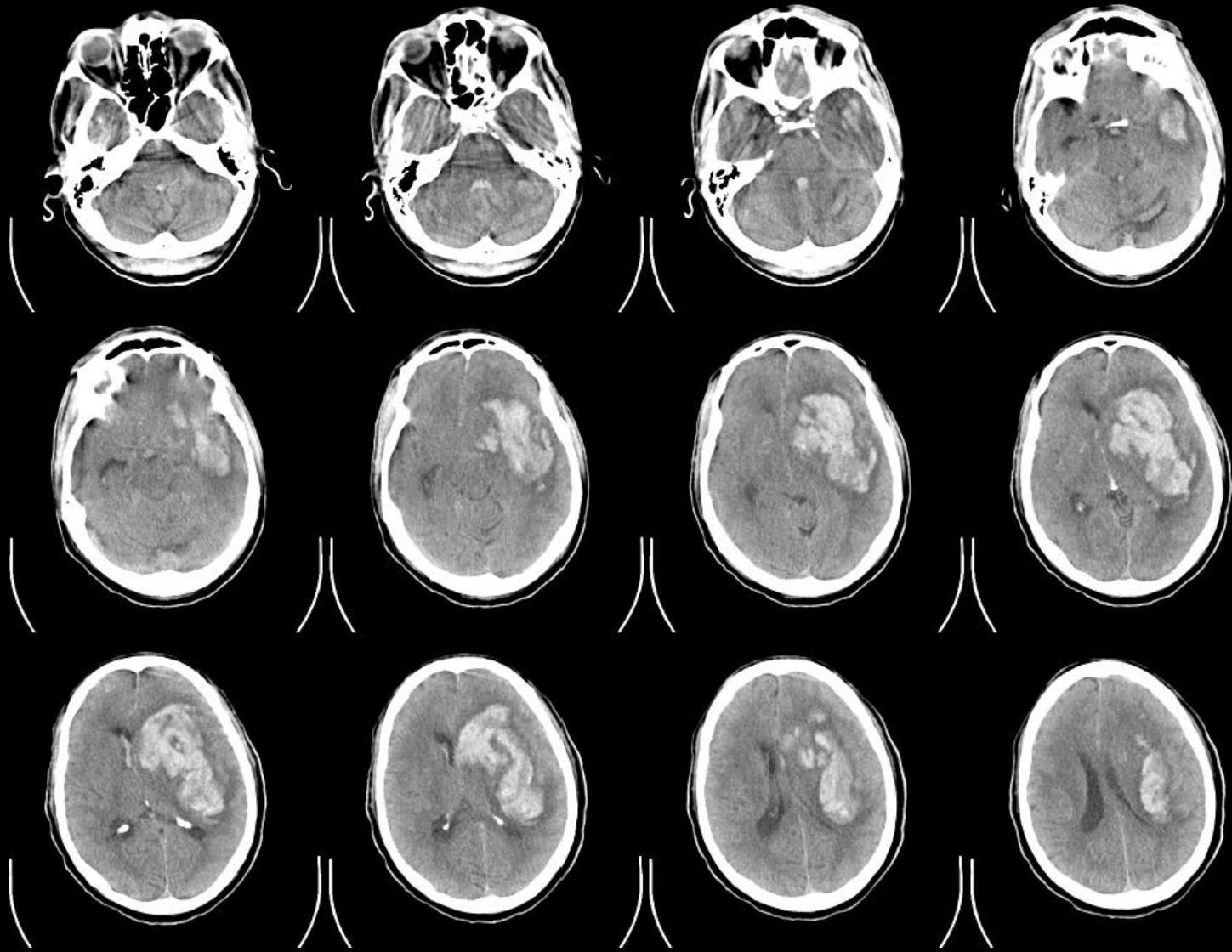




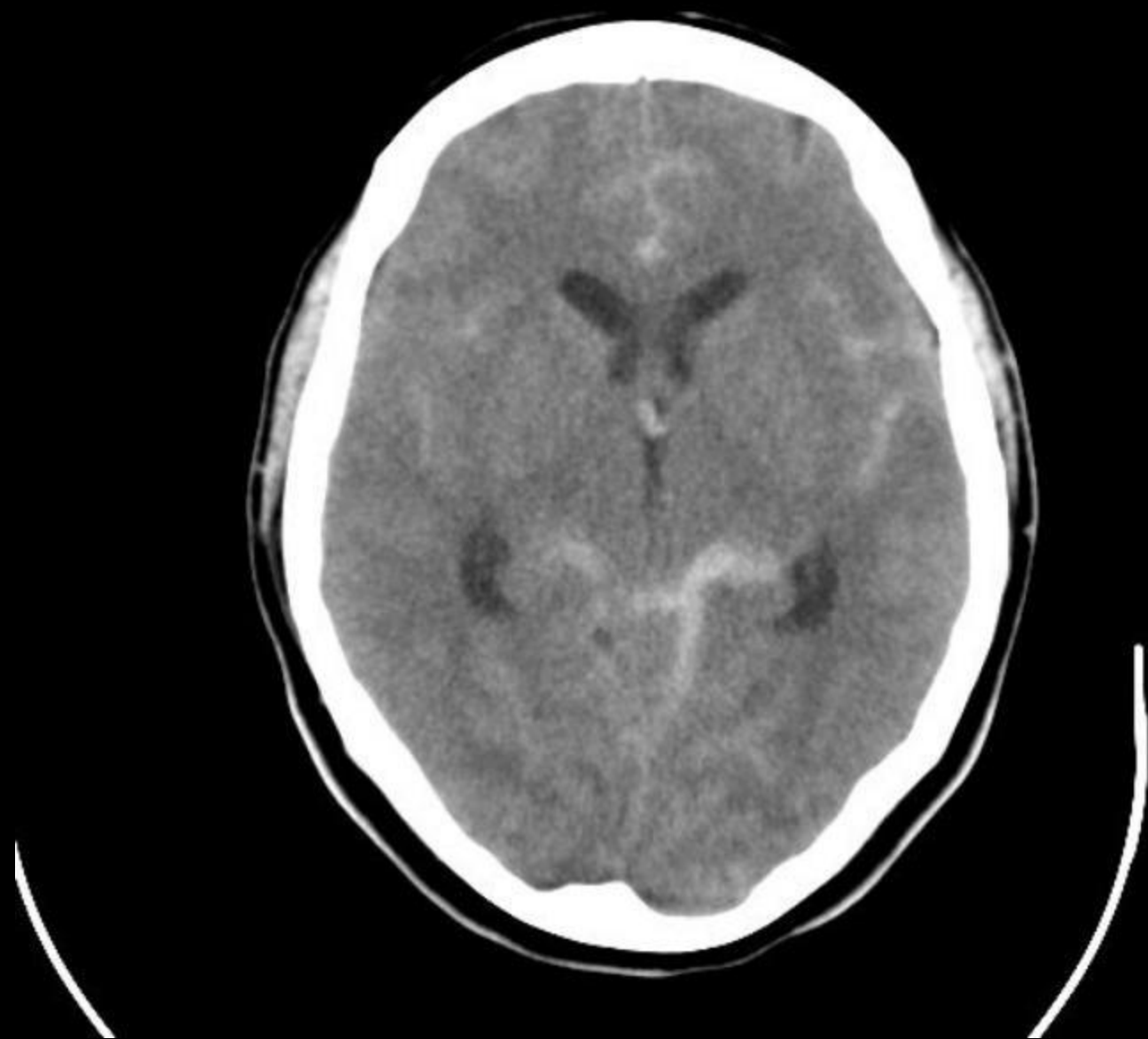
||



||

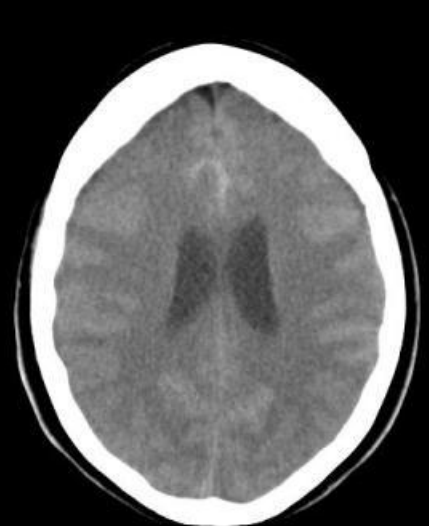
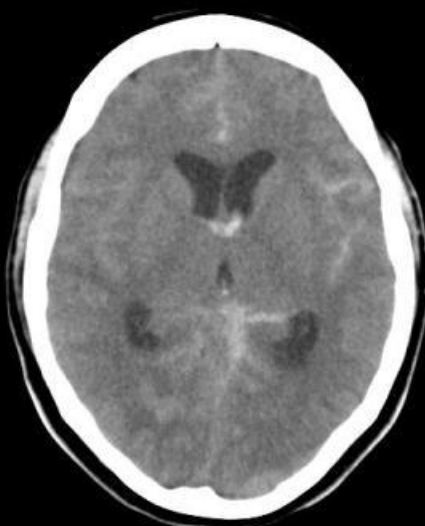
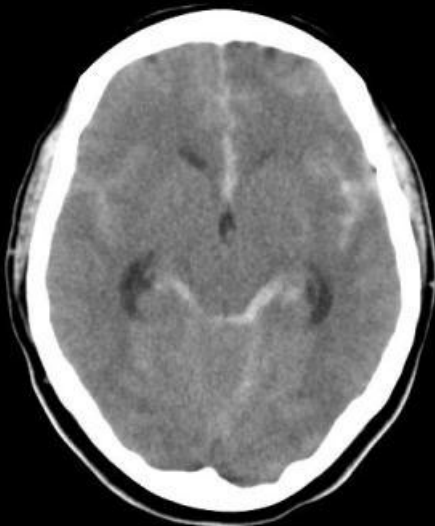
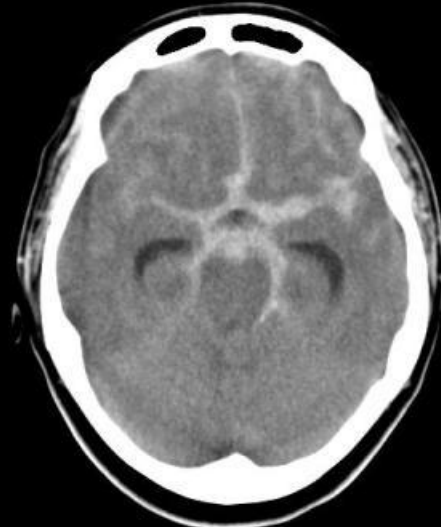
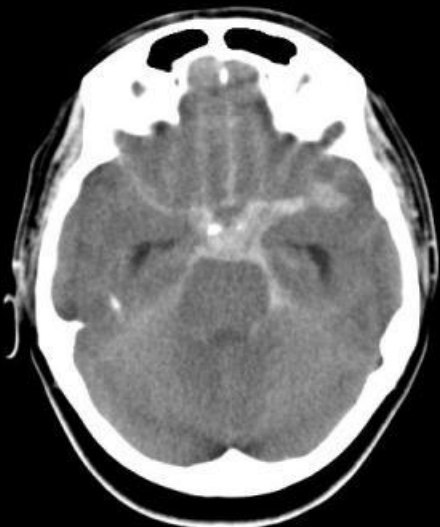


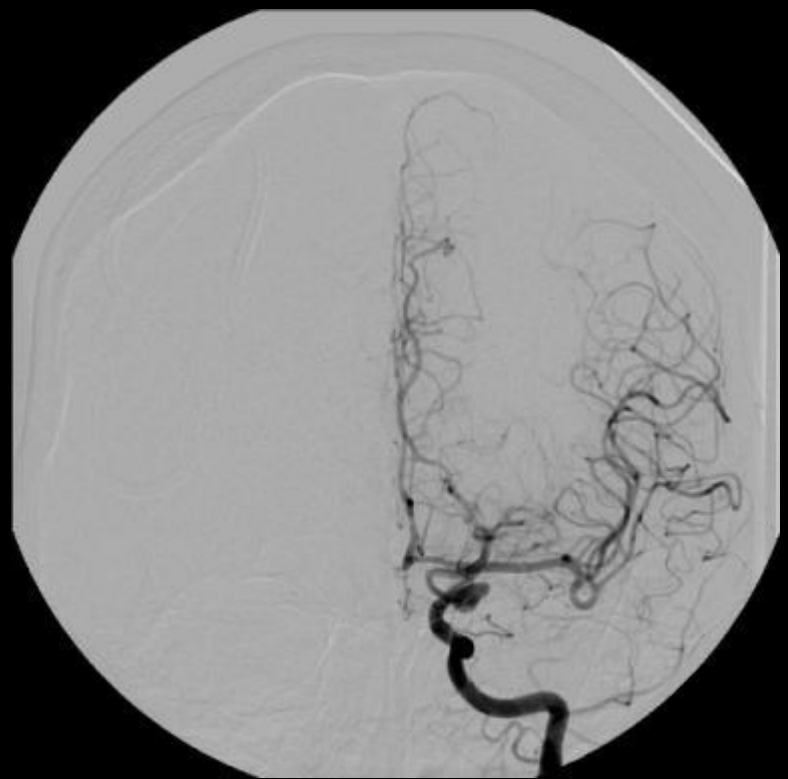


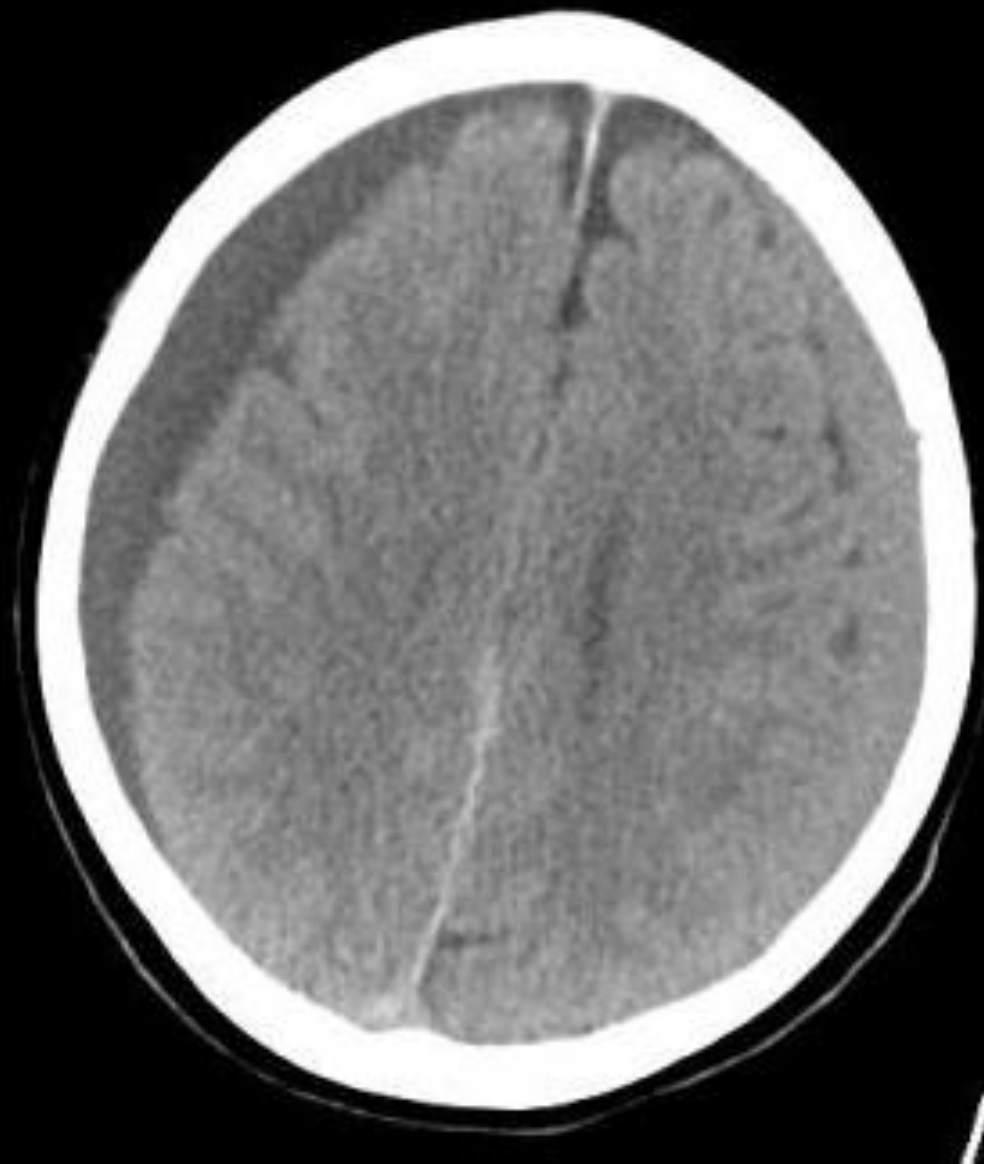


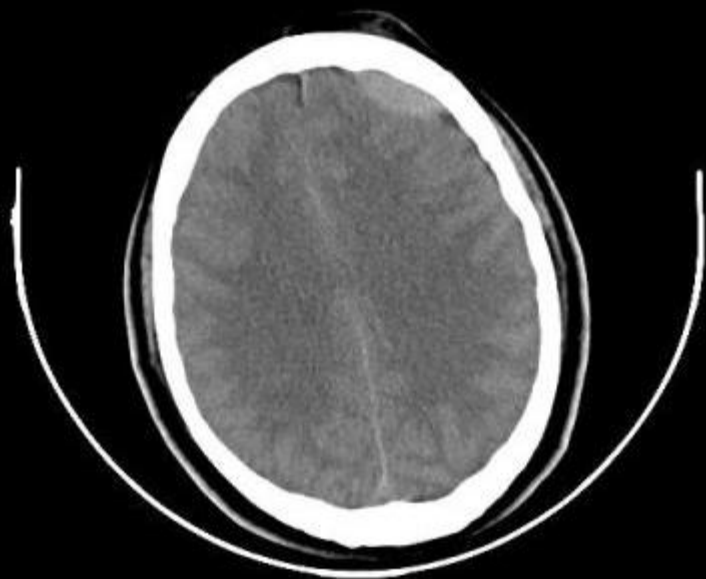
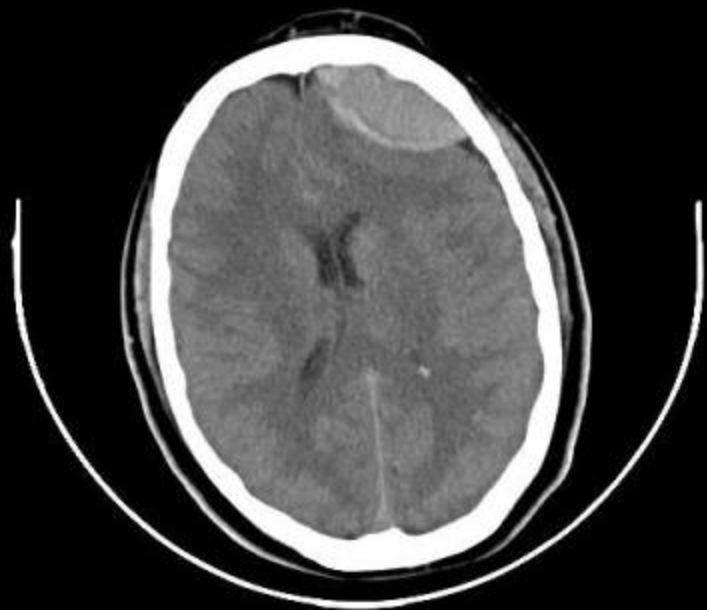
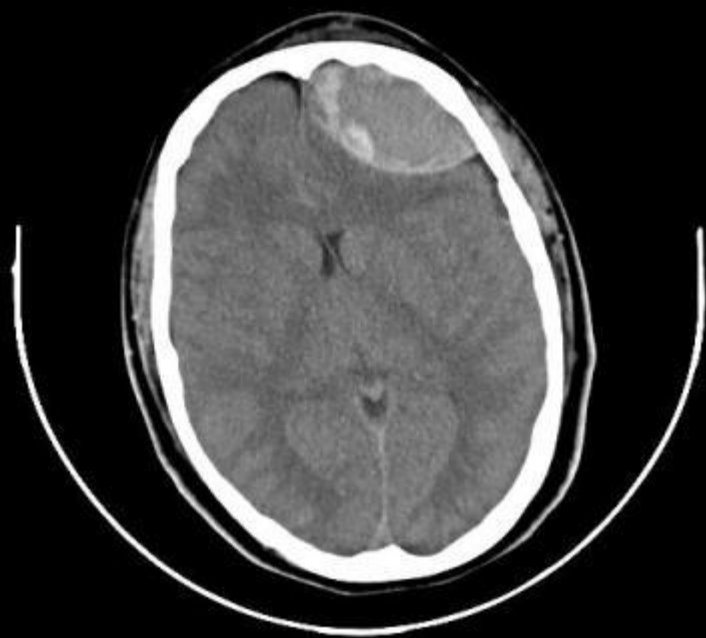
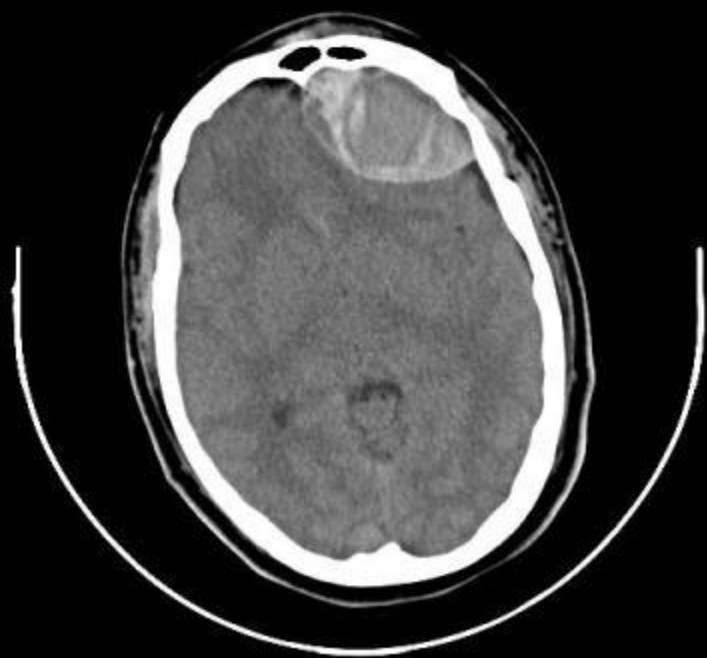
The Star of Death
JP Shen













The End